

# Brick Line

DECO

The Brick Line Collection proposes a highly sought-after play of lines and shapes. The decorative potential is endless, featuring a geometric-print base combined with the rectangular format of the free-form brick. The straight and parallel lines rotate and cross over each other, giving rise to herringbone, rhombuses, and various other regular geometries, inspired by certain mathematical figures.

This visual amalgamation is emphasised by the use of digital material, which is used to print delicate silver outlines onto the monochrome white background.



Brick Line White 11x33,15 / 4,3"x 13,1"



Brick Line White 11x33,15 / 4,3"x 13,1"



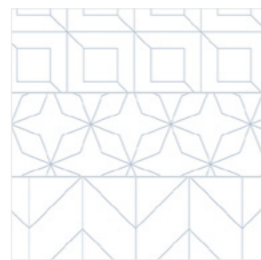
Brick Line White 11x33,15 / 4,3"x 13,1"



Brick Line White 33,15x33,15 / 13,1"x 13,1"



Brick Line White  
11x33,15 / 4,3"x 13,1"



Brick Line White  
33,15x33,15 / 13,1"x 13,1"

# Brick Line

DECO



FROST-PROOF CLASS

## TECHNICAL DATA

| COLOUR           | BENDING<br>ISO-10545-4 | HARDNESS<br>MOHS/EN-101 | ABRASION-PEI<br>ISO-10545-7 | CRAZING<br>ISO-10545-11 | CHEMICAL ATTACK RESISTANCE (ISO-10545-13) |                    |                   |             | FROST R.<br>ISO-10545-12 | SLIP RESISTANCE<br>DIN 51130-R | SLIP RESISTANCE<br>UNE-ENV 12633 | GROUP |
|------------------|------------------------|-------------------------|-----------------------------|-------------------------|---|--------------------|-------------------|-------------|--------------------------|--------------------------------|----------------------------------|-------|
|                  |                        |                         |                             |                         | STAINS                                    | CLEANING<br>AGENTS | POHL<br>ADDITIVES | ACIDS/BASES |                          |                                |                                  |       |
| BRICK LINE WHITE | ≥ 35                   | 4                       | -                           | PASS                    | 5   | GA                 | GA                | GLA/GHA     | PASS                     | -                              | -                                | W     |

All formats of our paving and tiling meet European standard EN-UNE-14411 and our parameters of length, width, thickness, orthogonality and planarity meet standard UNE - EN ISO 10545-2. Avoid applying white or red tile adhesive outdoors WHERE THERE IS A RISK OF FROST. Suitable for use in outdoor areas where this is a risk of frost.

## PACKING LIST

| SIZE        | ITEM       | PCS / BOX | SQM / BOX | BOX / PAL | SQM / PAL | KG / BOX | KG / SQM | KG / PAL |
|-------------|------------|-----------|-----------|-----------|-----------|----------|----------|----------|
| 11x33,15    | BRICK LINE | 31        | 1,13      | 60        | 67,8      | 18,87    | 16,7     | 1132     |
| 33,15x33,15 | BRICK LINE | 12        | 1,32      | 48        | 63,6      | 22,04    | 16,7     | 1058     |