

The logo consists of a white rectangular frame. The word "MARQUIS" is written in a large, bold, serif font across the top of the frame. Below it, the word "COLLECTION" is written in a smaller, all-caps, sans-serif font. At the bottom of the frame, the word "EXCLUSIVE" is written in a small, all-caps, sans-serif font.

MARQUIS  
COLLECTION  
EXCLUSIVE

Inspiration, design & more

[www.marquis-collection.com](http://www.marquis-collection.com)

MARQUIS  
COLLECTION  
EXCLUSIVE

MARQUIS COLLECTION presents its EXCLUSIVE collection. In it are hidden the luxury must-have to dress your homes.

Without losing its original essence, this selection of avant-garde-inspired collections, with premium finishes and formats, is a clear exponent of the refinement and elegance that distinguish each and every one of the pieces that carry its label.

Discover what's new in MARQUIS COLLECTION EXCLUSIVE to fill your living spaces.

CONTENTS

4	CALIZA <i>Stone Porcelain Tiles</i>
8	LUNA <i>Stone Porcelain Tiles</i>
10	LAGOM <i>Stone Porcelain Tiles</i>
16	PAROS <i>Marble Porcelain Tiles</i>
18	MILOS <i>Marble Porcelain Tiles</i>
20	IBIZA BLACK & WHITE <i>Marble Porcelain Tiles</i>
22	STAR TILE <i>Hydraulic Porcelain Tiles</i>

# Caliza

Stone

Porcelain Tiles

60x120 cm / 32x62,5 cm

Caliza is a limestone collection inspired in a trend centred on the search for pure, welcoming and enveloping natural spaces where we can relax and connect with the natural world. Caliza arises as a response to a growing current need to seek sustainable designs, organic materials, shapes and colours inspired in nature, which is increasingly integrated into the spaces we inhabit.

The call of nature has also been heard in the world of home design!

Caliza stone has a fine-grained textured surface with traces of mineral and organic mixtures in its interior that give it a slight dynamism. The homogeneity of the background is altered by attractive nebulae that alternate medium tones with lightly nuances, between which appear vein formations with mineral crystallisations of deeper tones, reinforced with the application of digital matter enhancing the naturalness of the surface. Sinuous graphic design focuses on the idea of decorating embracing more organic shapes to soften the most natural and minimalist environments.

www.marquis-collection.com



FROST-PROOF



MATTE



SUBSTANTIAL VARIATION

## GRAPHIC DEVELOPMENT

60x120 / 12 patterns

32x62,5 / 20 patterns

TECHNICAL DATA	CALIZA PEARL	CALIZA NATURAL	CALIZA MARENGO
BENDING ISO-10545-4	≥ 35	≥ 35	≥ 35
HARDNESS MOHS/EN-101	7	7	7
ABRASION-PEI ISO-10545-7	IV	IV	III
CRAZING ISO-10545-11	PASS	PASS	PASS
CHEMICAL ATTACK RESISTANCE (ISO-10545-13)	STAINS	5	5
	CLEANING AGENTS	A	A
	POOL ADDITIVES	A	A
	ACIDS/BASES	LA/HA	LA/HA
FROST RESISTANCE ISO-10545-12	PASS	PASS	PASS
SLIP RESISTANCE DIN 51130-R	R-10	R-10	R-10
SLIP RESISTANCE UNE-ENV 12633	C1	C1	C1
GROUP	D	D	D

PACKING LIST	CALIZA	CALIZA
SIZE	32x62,5 cm	120x60 cm
PCS / BOX	5	2
SQM / BOX	1	1,44
BOX / PAL	48	30
SQM / PAL	48	43,2
KG / BOX	19,90	32,4
KG / SQM	19,90	22,5
KG / PAL	955	972



CALIZA MARENGO  
60x120 cm / 23,6" x 47,3"



CALIZA PEARL  
60x120 cm / 23,6" x 47,3"



CALIZA NATURAL  
60x120 cm / 23,6" x 47,3"



CALIZA MARENGO  
60x120 cm / 23,6" x 47,3"



CALIZA NATURAL  
60x120 cm  
23,6" x 47,3"



# Caliza

Stone

Porcelain Tiles

60x120 cm / 32x62,5 cm

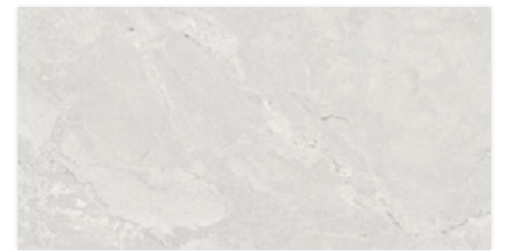


CALIZA MARENGO  
60x120 cm / 23,6" x 47,3"

MARQUIS  
COLLECTION  
EXCLUSIVE



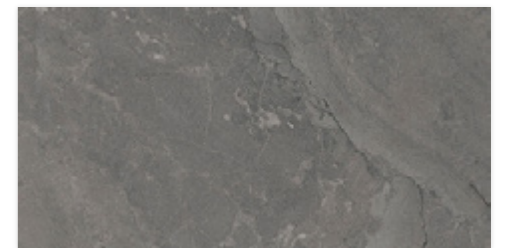
CALIZA NATURAL  
60x120 cm / 23,6" x 47,3"



CALIZA PEARL  
32x62,5 cm / 12,6" x 24,6"



CALIZA NATURAL  
32x62,5 cm / 12,6" x 24,6"

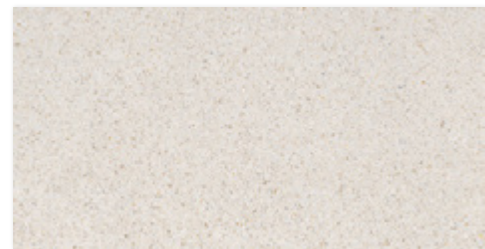


CALIZA MARENGO  
32x62,5 cm / 12,6" x 24,6"

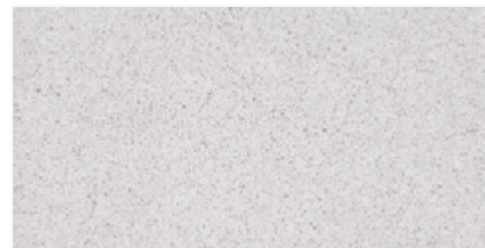


CALIZA  
PEARL  
60x120 cm  
23,6" x 47,3"

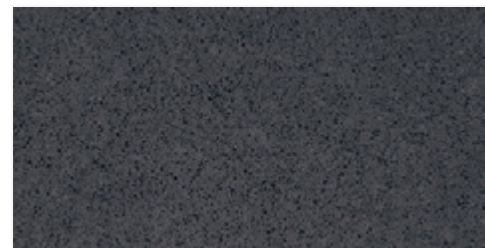




LUNA CREAM  
32x62,5 cm / 12,6" x 24,6"



LUNA GREY  
32x62,5 cm / 12,6" x 24,6"



LUNA DARK  
32x62,5 cm / 12,6" x 24,6"



LUNA GREY  
32x62,5 cm  
12,6" x 24,6"



LUNA DARK 32x62,5 cm / 12,6" x 24,6"



MARQUIS  
COLLECTION  
EXCLUSIVE



LUNA CREAM  
32x62,5 cm / 12,6" x 24,6"

# Luna

## Stone

## Porcelain Tiles

### 32x62,5 cm

The Italian essence of terrazzo returns to the forefront of decorative trends with this collection, which reproduces a material composed of small-grained marble chips highlighted with digital material and mixed with cement and ground marble.

The tones are two neutrals (grey and cream), suitable for recreating soft and discreet atmospheres, and an intense black that gives an elegant rotundity to the space.

[www.marquis-collection.com](http://www.marquis-collection.com)



FROST-PROOF



MATTE



MODERATE VARIATION

LUNA GREY  
32x62,5 cm  
12,6" x 24,6"

### GRAPHIC DEVELOPMENT

32x62,5 / 20 patterns

TECHNICAL DATA	LUNA CREAM	LUNA GREY	LUNA DARK
BENDING ISO-10545-4	≥ 35	≥ 35	≥ 35
HARDNESS MOHS/EN-101	7	7	7
ABRASION-PEI ISO-10545-7	IV	IV	II
CRAZING ISO-10545-11	PASS	PASS	PASS
CHEMICAL ATTACK RESISTANCE (ISO-10545-13)	STAINS	5	5
	CLEANING AGENTS	A	A
	POOL ADDITIVES	A	A
	ACIDS/BASES	LA/HA	LA/HA
FROST RESISTANCE ISO-10545-12	PASS	PASS	PASS
SLIP RESISTANCE DIN 51130-R	R-9	R-9	R-9
SLIP RESISTANCE UNE-ENV 12633	C1	C1	C1
GROUP	D+	D+	B

PACKING LIST	LUNA
SIZE	32x62,5 cm
PCS / BOX	5
SQM / BOX	1
BOX / PAL	48
SQM / PAL	48
KG / BOX	19,9
KG / SQM	19,9
KG / PAL	955



# Lagom

## Stone

### Porcelain Tiles

60x120 cm / 60x60 cm / 32x62,5 cm

Lagom collection is in line with modern trends where nature has a prominent influence. Inspired by a type of slate common to the northern coast of Norway and re-interpreted in a ceramic version, Lagom is presented as a compact, cement-like stone with thin layers that simulate a realistic 3D effect. Taking this fossil rock with its foliated structure as a reference, Lagom Collection is composed of a monochromatic base with a palette based on two intensities of grey (Dark and Grey) together with a beige tone (Almond) and a lighter one (Pearl).

Lagom bases are complemented by a decorative relief composed of a succession of concave channels that generate a striated and architectural surface that breaks up the homogeneity of the stone without altering its natural appearance, creating an effect of great beauty. A proposal with a high aesthetic value that preserves the charm of the original stone material but with the ease of use of porcelain stoneware, thus making it possible to design new landscapes in interior projects that increasingly blend in with the charm of nature outside.

www.marquis-collection.com



FROST-PROOF



MATTE



V2 SLIGHT VARIATION

#### GRAPHIC DEVELOPMENT

60x120 / 12 patterns    60x60 / 20 patterns    32x62,5 / 20 patterns    DECO 32x62,5 / 10 patterns

TECHNICAL DATA	LAGOM PEARL	LAGOM DECO PEARL	LAGOM ALMOND	LAGOM DECO ALMOND	LAGOM GREY	LAGOM DECO GREY	LAGOM DARK
BENDING ISO-10545-4	≥ 35	≥ 35	≥ 35	≥ 35	≥ 35	≥ 35	≥ 35
HARDNESS MOHS/EN-101	7	7	7	7	7	7	7
ABRASION-PEI ISO-10545-7	IV	-	IV	-	IV	-	II
CRAZING ISO-10545-11	PASS	PASS	PASS	PASS	PASS	PASS	PASS
CHEMICAL ATTACK RESISTANCE (ISO-10545-13)	STAINS	5	5	5	5	5	5
	CLEANING AGENTS	A	A	A	A	A	A
	POOL ADDITIVES	A	A	A	A	A	A
	ACIDS/BASES	LA/HA	LA/HA	LA/HA	LA/HA	LA/HA	LA/HA
FROST RESISTANCE ISO-10545-12	PASS	PASS	PASS	PASS	PASS	PASS	PASS
SLIP RESISTANCE DIN 51130-R	R-10	-	R-10	-	R-10	-	R-10
SLIP RESISTANCE UNE-ENV 12633	C1	-	C1	-	C1	-	C1
GROUP	D+	W	D+	W	D+	W	C

PACKING LIST	LAGOM	LAGOM	LAGOM
SIZE	32x62,5 cm	60x60 cm	120x60 cm
PCS / BOX	5	3	2
SQM / BOX	1	1,08	1,44
BOX / PAL	48	40	30
SQM / PAL	48	43,2	43,2
KG / BOX	19,90	22,0	32,4
KG / SQM	19,90	20,4	22,5
KG / PAL	955	881	972



LAGOM PEARL  
60x120 cm / 23,6" x 47,3"



LAGOM PEARL  
60x120 cm / 23,6" x 47,3"



LAGOM ALMOND  
60x120 cm / 23,6" x 47,3"



LAGOM GREY  
60x120 cm / 23,6" x 47,3"



LAGOM DARK  
60x120 cm / 23,6" x 47,3"



# Lagom

Stone

Porcelain Tiles

60x120 cm / 60x60 cm / 32x62,5 cm



LAGOM DARK  
60x120 cm / 23,6" x 47,3"



MARQUIS  
COLLECTION  
EXCLUSIVE

LAGOM ALMOND  
32x62,5 cm / 12,6" x 24,6"  
LAGOM DECO ALMOND  
32x62,5 cm / 12,6" x 24,6"  
LAGOM ALMOND  
60x60 cm / 23,6" x 23,6"



LAGOM PEARL  
60x60 cm / 23,6" x 23,6"



LAGOM ALMOND  
60x60 cm / 23,6" x 23,6"



LAGOM GREY  
60x60 cm / 23,6" x 23,6"



LAGOM DARK  
60x60 cm / 23,6" x 23,6"



# Lagom

Stone

Porcelain Tiles

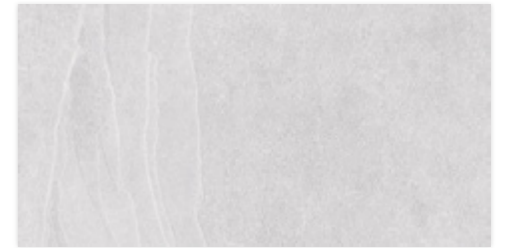
60x120 cm / 60x60 cm / 32x62,5 cm



LAGOM DECO ALMOND  
32x62,5 cm / 12,6" x 24,6"  
LAGOM ALMOND  
60x60 cm / 23,6" x 23,6"



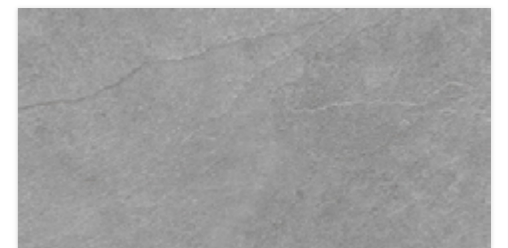
LAGOM DECO GREY  
32x62,5 cm / 12,6" x 24,6"  
LAGOM GREY  
60x120 cm / 23,6" x 47,3"



LAGOM PEARL  
32x62,5 cm / 12,6" x 24,6"



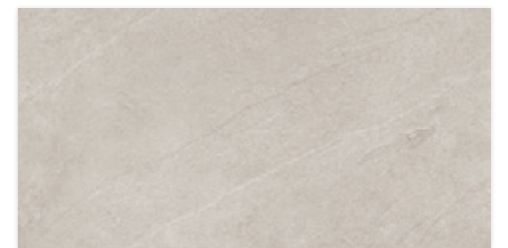
LAGOM DECO PEARL  
32x62,5 cm / 12,6" x 24,6"



LAGOM GREY  
32x62,5 cm / 12,6" x 24,6"



LAGOM DECO GREY  
32x62,5 cm / 12,6" x 24,6"



LAGOM ALMOND  
32x62,5 cm / 12,6" x 24,6"



LAGOM DECO ALMOND  
32x62,5 cm / 12,6" x 24,6"





PAROS  
60x120 cm / 23,6" x 47,3"



PAROS 60x120 cm / 23,6" x 47,3"



PAROS  
60x120 cm / 23,6" x 47,3"

# Paros

## Marble

## Porcelain Tiles

### 60x120 cm

Classic aesthetic collection based on a marble originating in the Apuan Alps, in Italy. The white base of Paros is perfectly combined with elegant veins in shades of grey and gold that serve to give an elegant and timeless touch to any space.

Great graphic variety that creates elegant surfaces where the golden details of the veins stand out, enhanced with digital material.

[www.marquis-collection.com](http://www.marquis-collection.com)



FROST-PROOF



MATTE



MODERATE VARIATION

PAROS  
60x120 cm  
23,6" x 47,3"

#### GRAPHIC DEVELOPMENT

60x120 / 12 patterns

TECHNICAL DATA	PAROS	
BENDING ISO-10545-4	≥ 35	
HARDNESS MOHS/EN-101	5	
ABRASION-PEI ISO-10545-7	IV	
CRAZING ISO-10545-11	PASS	
CHEMICAL ATTACK RESISTANCE (ISO-10545-13)	STAINS	5
	CLEANING AGENTS	A
	POOL ADDITIVES	A
	ACIDS/BASES	LA/HA
FROST RESISTANCE ISO-10545-12	PASS	
SLIP RESISTANCE DIN 51130-R	R-9	
SLIP RESISTANCE UNE-ENV 12633	C1	
GROUP	B	

PACKING LIST	PAROS
SIZE	60x120 cm
PCS / BOX	2
SQM / BOX	1,44
BOX / PAL	30
SQM / PAL	43,2
KG / BOX	32,4
KG / SQM	22,5
KG / PAL	972



# Milos

## Marble

### Porcelain Tiles

32x62,5 cm

Milos is a marble-style porcelain tile with a background of extraordinary whiteness. Due to the subtle presence of delicate veins, Milos reproduces marble surfaces of superior quality. In addition, they appear in a peculiar warm tone that emphasises their high aesthetic qualities, representing purity and calmness.

This white marble concept is used by architects in order to bring spaciousness and luminosity to rooms. Other qualities of Milos are its timelessness and ease of combination with other materials. It goes well with neutral tones (creams, blacks or greys), while in combination with other more intense colours it allows to soften environments.

Unforgettable emotions for the spaces created with the Milos collection, synonymous with light, elegance and majesty.

[www.marquis-collection.com](http://www.marquis-collection.com)



FROST-PROOF



MATTE



SLIGHT VARIATION

#### GRAPHIC DEVELOPMENT

32x62,5 / 14 patterns

DECO 32x62,5 / 14 patterns

#### TECHNICAL DATA

	MILOS WHITE	MILOS DECO WHITE
BENDING ISO-10545-4	≥ 35	≥ 35
HARDNESS MOHS/EN-101	5	5
ABRASION-PEI ISO-10545-7	IV	-
CRAZING ISO-10545-11	PASS	PASS
CHEMICAL ATTACK RESISTANCE (ISO-10545-13)	STAINS	5
	CLEANING AGENTS	A
	POOL ADDITIVES	A
	ACIDS/BASES	LA/HA
FROST RESISTANCE ISO-10545-12	PASS	PASS
SLIP RESISTANCE DIN 51130-R	R-9	-
SLIP RESISTANCE UNE-ENV 12633	C1	-
GROUP	D	W

#### PACKING LIST

	MILOS / MILOS DECO
SIZE	32x62,5 cm
PCS / BOX	5
SQM / BOX	1
BOX / PAL	48
SQM / PAL	48
KG / BOX	19,9
KG / SQM	19,9
KG / PAL	955



MILOS DECO WHITE 32x62,5 cm / 12,6" x 24,6"  
MILOS WHITE 32x62,5 cm / 12,6" x 24,6"



MILOS WHITE  
32x62,5 cm / 12,6" x 24,6"

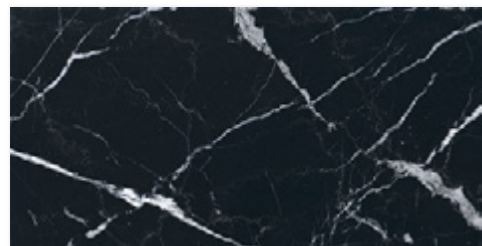


MILOS DECO WHITE  
32x62,5 cm / 12,6" x 24,6"

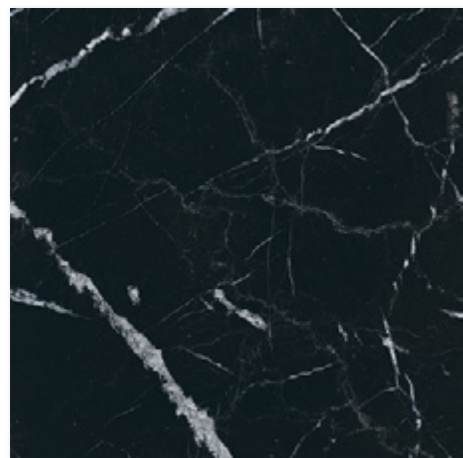


MILOS WHITE  
32x62,5 cm / 12,6" x 24,6"

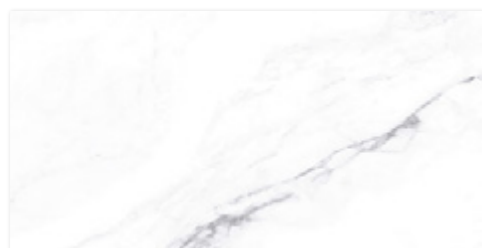




IBIZA BLACK  
32x62,5 cm / 12,6" x 24,6"



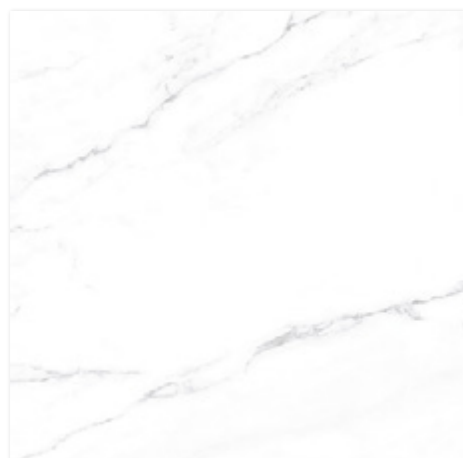
IBIZA BLACK  
60x60 cm / 23,6" x 23,6"



216551IW IBIZA WHITE  
32x62,5 cm / 12,6" x 24,6"



IBIZA DECO WHITE  
32x62,5 cm / 12,6" x 24,6"



IBIZA WHITE  
60x60 cm / 23,6" x 23,6"



IBIZA DECO WHITE 32x62,5 cm / 12,6" x 24,6"



MARQUIS  
COLLECTION  
EXCLUSIVE

IBIZA WHITE  
60x60 cm / 23,6" x 23,6"

# Ibiza B&W

Marble

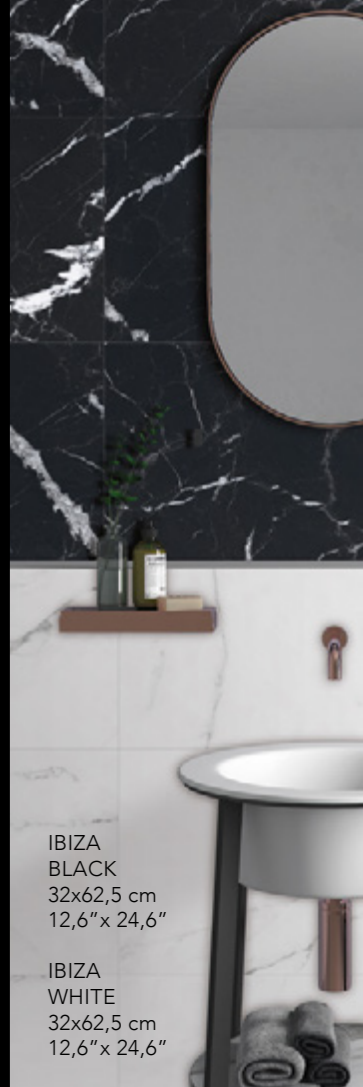
Porcelain Tiles

32x62,5 / 60x60 cm

The classic, elegant and minimalist style of black & white marble is reinvented as a decorative trend with this collection, which stands out for the neutrality and purity of their backgrounds and the fine details of their veins.

The beauty of these marbles, with an outstanding timeless aesthetic, and the high technical performance of the porcelain material, make it a highly appreciated product by architects and interior designers all over the world.

[www.marquis-collection.com](http://www.marquis-collection.com)



IBIZA BLACK  
32x62,5 cm / 12,6" x 24,6"

IBIZA WHITE  
32x62,5 cm / 12,6" x 24,6"

## GRAPHIC DEVELOPMENT

60x60 / 12 patterns	32x62,5 WHITE 18 patterns	32x62,5 BLACK 11 patterns	32x62,5 DECO WHITE 18 patterns
---------------------	------------------------------	------------------------------	-----------------------------------

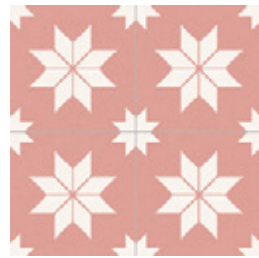
TECHNICAL DATA	IBIZA WHITE	IBIZA DECO WHITE	IBIZA BLACK
BENDING ISO-10545-4	≥ 35	≥ 35	≥ 35
HARDNESS MOHS/EN-101	6	6	6
ABRASION-PEI ISO-10545-7	IV	-	II
CRAZING ISO-10545-11	PASS	PASS	PASS
CHEMICAL ATTACK RESISTANCE (ISO-10545-13)	STAINS	5	5
	CLEANING AGENTS	A	A
	POOL ADDITIVES	A	A
	ACIDS/BASES	LA/HA	LA/HA
FROST RESISTANCE ISO-10545-12	PASS	PASS	PASS
SLIP RESISTANCE DIN 51130-R	R-9	-	R-9
SLIP RESISTANCE UNE-ENV 12633	C1	-	C1
GROUP	B	W	B

PACKING LIST	IBIZA / IBIZA DECO	IBIZA
SIZE	32x62,5 cm	60x60 cm
PCS / BOX	5	3
SQM / BOX	1	1,08
BOX / PAL	48	40
SQM / PAL	48	43,2
KG / BOX	19,9	22,0
KG / SQM	19,9	20,4
KG / PAL	955	881





STAR TILE BLACK  
33,15x33,15 cm  
13,1" x 13,1"



STAR TILE PINK  
33,15x33,15 cm  
13,1" x 13,1"



STAR TILE GREY  
33,15x33,15 cm  
13,1" x 13,1"



STAR TILE BLUE  
33,15x33,15 cm  
13,1" x 13,1"



# Star Tile

*Hydraulic*

*Porcelain Tiles*

**33,15x33,15 cm**

Star Tile is a collection of porcelain tiles in a hydraulic style with a classic geometric design that evokes the beauty of a starry night sky. Stars formed by eight diamonds alternate as a repeating motif with smaller eight-pointed stars, all in luminous white on black, pink, grey and cobalt blue backgrounds.

This starry pattern creates very relaxing atmospheres and stands out with a beautiful contrast against the intensity of the backgrounds.

[www.marquis-collection.com](http://www.marquis-collection.com)



FROST-PROOF



MATTE



STAR TILE BLUE  
33,15x33,15 cm  
13,1" x 13,1"

## GRAPHIC DEVELOPMENT

33,15x33,15 / 1 pattern

TECHNICAL DATA	STAR TILE BLACK	STAR TILE PINK	STAR TILE GREY	STAR TILE BLUE
BENDING ISO-10545-4	≥ 35	≥ 35	≥ 35	≥ 35
HARDNESS MOHS/EN-101	5	5	5	5
ABRASION-PEI ISO-10545-7	II	IV	II	II
CRAZING ISO-10545-11	PASS	PASS	PASS	PASS
CHEMICAL ATTACK RESISTANCE (ISO-10545-13)	STAINS	5	5	5
	CLEANING AGENTS	A	A	A
	POOL ADDITIVES	A	A	A
	ACIDS/BASES	LA/HA	LA/HA	LA/HA
FROST RESISTANCE ISO-10545-12	PASS	PASS	PASS	PASS
SLIP RESISTANCE DIN 51130-R	R-9	R-9	R-9	R-9
SLIP RESISTANCE UNE-ENV 12633	C1	C1	C1	C1
GROUP	B	D	B	B

## PACKING LIST

	STAR TILE
SIZE	33,15x33,15 cm
PCS / BOX	12
SQM / BOX	1,32
BOX / PAL	48
SQM / PAL	63,36
KG / BOX	21,3
KG / SQM	16,1
KG / PAL	1020

STAR TILE PINK  
33,15x33,15 cm / 13,1" x 13,1"



## Application Groups & more

	FROST-PROOF		MATTE		SLIGHT VARIATION		DO NOT INTERLOCK
	NON-SLIP		GLOSS		MODERATE VARIATION		DO NOT INTERLOCK MORE THAN 15%
	FLOOR TILES		LAPPATO		SUBSTANTIAL VARIATION		
	WALL TILES		GLOSSY MATTE				

GROUPS	CONDITIONS FOR LAYING TILES (PLACEMENT)	P.E.I.	Mohs	OBSERVATIONS
<b>A</b>	RECOMMENDED FOR MODERATE TO LOW FOOT TRAFFIC. SUITABLE FOR BEDROOMS AND/OR BATHROOMS IN HOUSES (AVOID ANY KIND OF ABRASSION).	I - II - III	4	
<b>B</b>	SUITABLE FOR MODERATE TO LOW FOOT TRAFFIC, E.G. MOST ROOMS IN THE HOUSE, EXCEPT FOR KITCHENS OR AREAS WITH DIRECT ACCESS TO OUTSIDE.	II - III	5	
<b>C</b>	FLOORING RECOMMENDED FOR MODERATE FOOT TRAFFIC. SUITABLE FOR ANY ROOM IN THE HOUSE, INCLUDING THE KITCHEN OR ENTRANCE HALL.	II - III	5 - 6	
<b>D</b>	FLOORING SUITABLE FOR HEAVY FOOT TRAFFIC, E.G. ENTRANCES WITH DIRECT ACCESS TO OUTSIDE, ALL ROOMS IN THE HOUSE, AND PROFESSIONAL OFFICES.	IV	5 - 6	SUITABLE MEANS MUST BE INSTALLED (DOORMATS, ETC.) IN ORDER TO PREVENT DAMAGE FROM ABRASIVE ELEMENTS
<b>GT</b>	FLOORING SUITABLE AND RECOMMENDED FOR AREAS WITH VERY HEAVY FOOT TRAFFIC, E.G. COMMERCIAL APPLICATIONS, BUILDING ENTRANCES AND CORRIDORS.	IV - V	7 - 8	SUITABLE MEANS MUST BE INSTALLED (DOORMATS, ETC.) IN ORDER TO PREVENT DAMAGE FROM ABRASIVE ELEMENTS
<b>E</b>	FLOOR TILES ONLY SUITABLE FOR OPEN (ROOFLESS) EXTERIORS (WHERE THERE IS A RISK OF WATER) LAYING INDOORS IS NOT RECOMMENDED IN ANY CASE.	III - IV - V	7 - 8	THE "ANTI-SLIP" REQUIREMENT IS NECESSARY
<b>W</b>	WALL TILES ONLY SUITABLE AS WALL COVERINGS.	NOT APPLICABLE	NOT APPLICABLE	APPLIES TO ALL POROUS MODELS, SOME DECORATED MODELS AND PORCELAIN WALLS

### NOTES

Abbreviations: GT = High traffic; E = Exteriors; W = Walls

If a model has a combination that can be defined as two distinct groups (e.g. III-5, could be Group B or Group C), the Technical Director will be responsible for defining to which laying group the model belongs to, depending on the type of model and its aesthetic characteristics.

When generating a model where the PEI-MOHS combination is not included in the definitions of this table, the Technical Director will define the placement group to which it belongs.

(\*) The inclusion in groups D and GT is only guaranteed if suitable means are installed in the areas with direct access to the exterior to prevent damage from abrasive elements.

FOR SPECIAL REQUESTS, PLEASE CONTACT THE FACTORY.

FORMAT / THICKNESS		BUILDING TECHNICAL CODE (UNE ENV 12633)	DIN 51130	CTE-12633		
8,15 x 33,15 cm	7,5 mm	<b>CLASS 1</b> DRY INDOOR AREAS, GRADE < 6%	ANGLE	R	ANGLE	CLASS
11 x 33,15 cm	7,5 mm		6° - 10°	R9	< 15°	0
33,15 x 33,15 cm	7,5 mm	<b>CLASS 2</b> DRY INDOOR AREAS, GRADE > 6% WET INDOOR AREAS, COVERED TERRACES, LOCKER ROOMS, SHOWERS, TOILETS, KITCHENS, ETC.	10° - 19°	R10	15° - 35°	1
32 x 62,5 cm	9,0 mm		19° - 27°	R11	35° - 45°	2
15 x 90 cm	10,0 mm		27° - 35°	R12	> 45°	3
60 x 60 cm	9,5 mm	<b>CLASS 3</b> AREAS WITH WATER, GREASE, LUBRICANT, ETC. WET INDOOR AREAS, GRADE > 6% OUTDOOR, SWIMMING POOLS	> 35°	R13		
60 x 120 cm	10,5 mm					

## Installation Advice & information

### GENERAL GUIDELINES FOR LAYING TILES IN INTERIORS

1. Prior to laying the tiles, it is essential that the supporting surface has completely set, meaning that it is dry and hard and has finished shrinking, in order to avoid the appearance of bubbles or cracks due to the lack of stability.

2. Before placing the tiles, check the quality, tone and thickness of each piece to ensure that it is free from any visible defect. For a greater decorative effect, mix pieces from various different boxes. Handle the pieces carefully to avoid smudging or chipping the edges of the tiles.

3. Do not wet or submerge the pieces in water before placing and do not use traditional adhesive (thickly laid adhesive). Apply a thin layer of C2 fast-drying adhesive (norm EN12.004) using a toothed trowel to place the piece. For large pieces (with one side over 40 cm in length) use the double adhesive method. Always follow the adhesive manufacturer's guidelines closely: method, time and amount of water to be mixed, time available to place the piece, etc.

4. Joints of at least 1.5mm should be used to lay the tile. Ensure that the adhesive has completely hardened before rounding off. Fill the joint with filler in order to prevent leakage. Do not use glue adhesive, grout or any kind of adhesive-based joint.

5. If you wish to link pieces, do not overlap for any more than 15% of the longest side of the piece (for example, for 12.8x65 pieces, do not link more than 15% ≈ 10 cm.)

6. If you have to carry out additional construction, the paving must be protected in order to avoid scratches from any abrasive material.

7. To alter the installation or rounding-off of the tiles, remove any remaining adhesive or filler with a product designed for this purpose (residue remover), following the manufacturer's guidelines. Before using a chemical product, we always recommend that you do a patch test on a piece of the tile that is not visible.

8. For daily tile cleaning, just use hot water and a domestic detergent. Do not use harsh cleaning products or products that contain acid, especially hydrochloric acid or hydrofluoric acid.

### PLACEMENT AND MAINTENANCE OF SPECIAL PIECES

Our catalogue includes a range of special pieces that are not made from ceramics. These include marble, glass, metal, resin, etc. Pay special attention to the placement and cleaning guidelines included in the box containing these pieces. For these pieces, do not use harsh cleaning materials (scouring pad, hydrochloric acid or other products that contain acid).

TYPE OF STAIN	RECOMMENDED DETERGENT
<ul style="list-style-type: none"> <li>vegetable and animal fat</li> <li>beer, wine, ice cream, coffee</li> <li>flaxseed oil</li> </ul>	Alkaline based: <ul style="list-style-type: none"> <li>caustic soda</li> <li>potash</li> </ul>
<ul style="list-style-type: none"> <li>vats, lime deposits</li> <li>rust stains</li> <li>felt tip pens, marker</li> </ul>	Acid based: <ul style="list-style-type: none"> <li>hydrochloric acid</li> <li>nitric acid</li> <li>sulphuric acid</li> <li>oxalic acid</li> </ul>
<ul style="list-style-type: none"> <li>mechanical oils</li> <li>glue, tyre glue</li> <li>resins or enamels, enamel waxes</li> </ul>	Solvents: <ul style="list-style-type: none"> <li>trilene</li> <li>turpentine</li> <li>nitro thinner</li> <li>acetone</li> </ul>
<ul style="list-style-type: none"> <li>everyday cleaning</li> </ul>	Ordinary detergents

NOTE: Do not use cleaning agents which contain hydrofluoric acid.



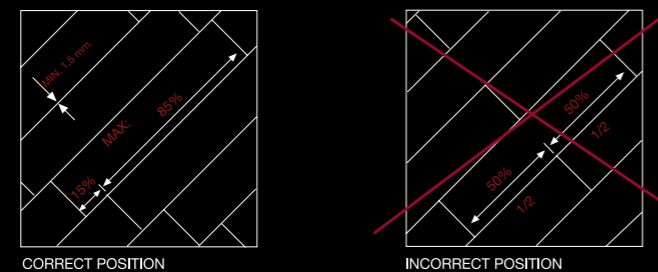
## LAYING PORCELAIN TILES

Although the guidelines for laying rectified porcelain tile are the same as for every kind of tile, rectified porcelain material is particularly delicate, especially around the edges. It is therefore very important that, as well as following the general guidelines, you also pay particular attention to the following:

1. It is very important that the supporting surface is flat. The surface upon which the tiles are to be placed should have been levelled.
2. Handle the material carefully to avoid smudging or chipping the edge of the tiles.
3. Do not submerge the tiles in water as the humidity could cause changes to its surface. Use a thin layer of adhesive (type C1 for interiors and type C2 for exteriors – according to EN 12.004).
4. Always use a joint with a minimum width of 1.5mm.
5. If you wish to link pieces, do not overlap any more than 15% of the length of the piece.

## PLACING REQUIREMENTS

The use of a minimum joint width of approx. 1.5mm is required. We recommend that joints are laid in a staggered format, with a maximum overlap of 15% of the length of the piece.



## ANTI SLIP RATINGS

### MARQUIS COLLECTION EXCLUSIVE

TILE	COLOUR	SLIP RATING
CALIZA	PEARL, NATURAL, MARENGO	R-10
LUNA	CREAM, GREY, DARK	R-9
LAGOM	PEARL, ALMOND, GREY, DARK	R-10
PAROS	-	R-9
MILOS	WHITE	R-9
IBIZA	BLACK, WHITE	R-9
STAR TILE	BLACK, GREY, BLUE, PINK	R-9

### MARQUIS COLLECTION

TILE	COLOUR	SLIP RATING
SHERWOOD	OAK, HONEY, WHITE	R-9
ESPACIO	GREY, WHITE	R-9
DIAMANTE	-	-
MARA	-	R-9
MEDITERRANEAN	BLACK, MIX	R-9
BRICKTREND	GREY	R-9
ANCIEN	NEUTRAL, GREY, BLUE, GREEN	-

## R-9 ANTI SLIP RATING

Tiles with an R-9 anti slip rating provide minor resistance to slips. R-9 rated tiles are best used in internal living areas which are generally dry.

## MODULUS OF RUPTURE - UNE - EN ISO 10545-4

The flexion resistance test consists of subjecting a whole tile to three-point loading, with the centre point in contact with the glazed face. It is expressed in Newtons per mm<sup>2</sup>.

## SCRATCH RESISTANCE (MOHS) - EN - 101

The sample is placed in an autoclave and subjected to a pressure of 5 kg/cm for two hours. If the glazed surface does not crack after one cycle, the product is considered to have passed.

## CRACKING RESISTANCE - UNE - EN ISO 10545-11

The sample is placed in an autoclave and subjected to a pressure of 5 kg/cm<sup>2</sup> for two hours. If the glazed surface does not crack after one cycle, the product is considered to have passed.

## RESISTANCE TO CHEMICAL ATTACK - UNE - EN ISO 10545-13

To test the resistance to chemical attack from certain household cleaning products and swimming pool additives, the piece is subjected to solutions of such substances for 24 hours, and then examined for any change in appearance. The results are classified from high to low, according to the following classes: GA - GB - GC.

To test the acid and base resistance, the piece is subjected to solutions of Hydrochloric Acid, Citric Acid and Potassium Hydroxide for 4 days and then examined for any change in appearance. The results are classified from high to low, according to the following classes: GLA - GLB - GLC or GHA - GHB - GHC, depending on the remaining concentrate of the applied solutions.

## STAIN RESISTANCE - UNE - EN ISO 10545-14

To test stain resistance, solutions of Iodine, light-coloured oil and olive oil are applied to the piece and allowed to dry for 24 hours. Then, the piece is cleaned, and its surface is examined for any change in appearance. Stain results are classified from high to low on a scale of 5 - 4 - 3 - 2 - 1, with a minimum admissible value of 3.

## FROST RESISTANCE - UNE - EN ISO 10545-12

The test consists of subjecting ten tiles of the same type, soaked in water, to a continuous icing - de-icing process of at least 100 cycles, at temperatures ranging from +5°C to -5°C, without the pieces being damaged.

## WEAR RESISTANCE (PEI) - UNE - EN ISO 10545-7

To test the resistance to wear, or PEI rating, 8 pieces measuring 10x10cm have their enamelled surface subjected to an abrasive solution comprising a mixture of different-sized metal balls, corundum sand and distilled water. The pieces are rotated by revolutions of between 100 and 12000 turns and, depending on when wear becomes visible, the tiles are classified as follows:

PEI	No. of rotations	Observations
PEI 0	100 rotations	Visible Wear
PEI I	150 rotations	Visible Wear
PEI II	600 rotations	Visible Wear
PEI III	750-1500 rotations	Visible Wear
PEI IV	2100-12000 rotations	Visible Wear
PEI V	>12000 rotations	Visible Wear

The higher the PEI, the more resistant the tile to abrasive agents.



MARQUIS  
COLLECTION  
EXCLUSIVE



[www.marquis-collection.com](http://www.marquis-collection.com)